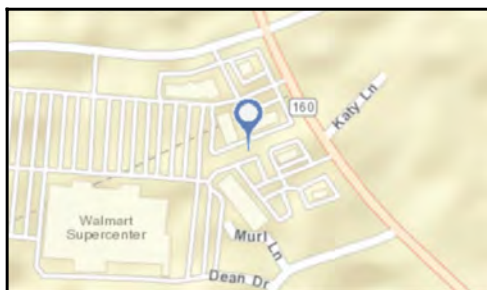
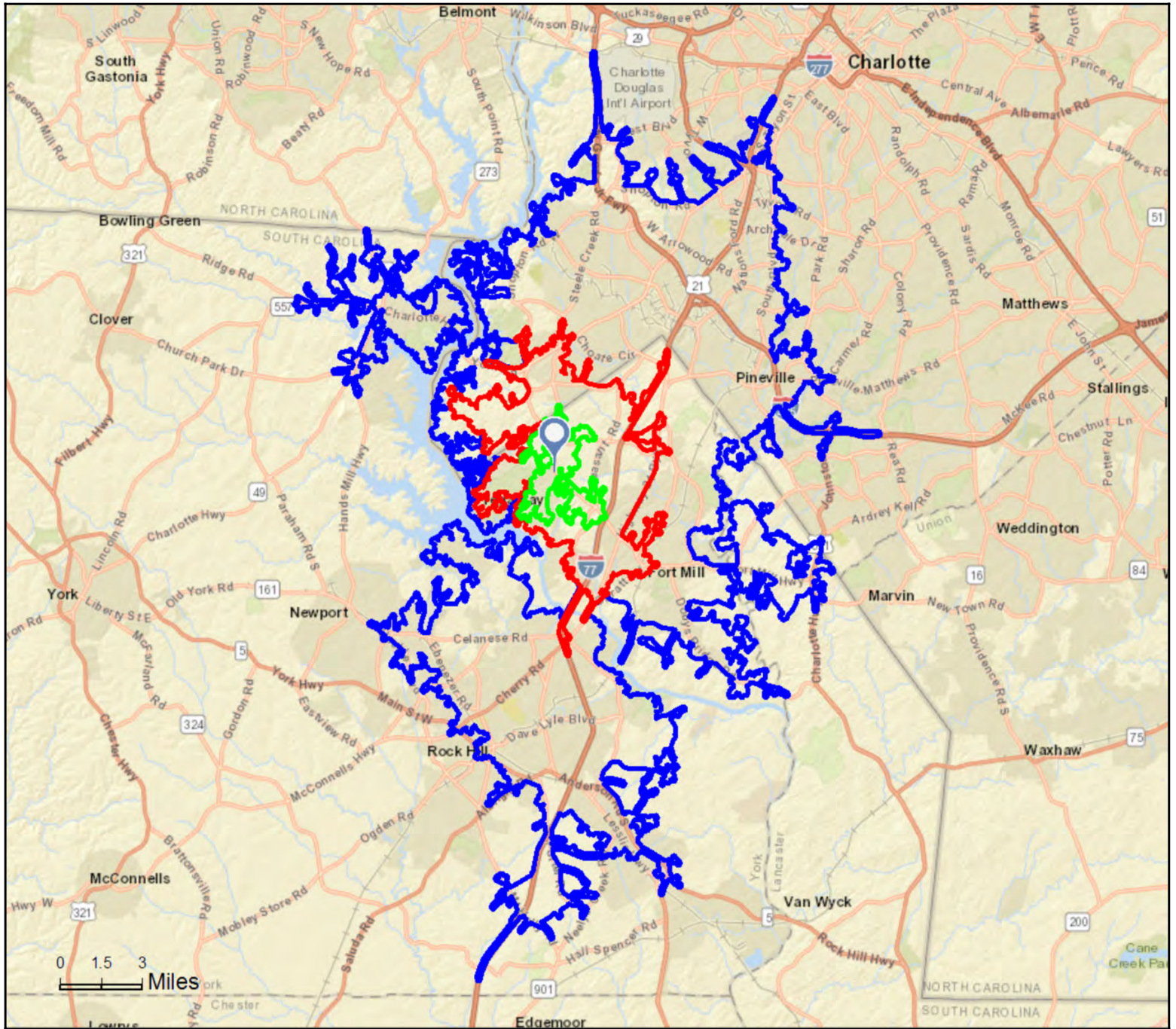


Site Map

Stonecrest, Tega Cay, SC
 2451 Highway 160 W, Fort Mill, South Carolina, 29708
 Drive Time: 5, 10, 20 minute radii

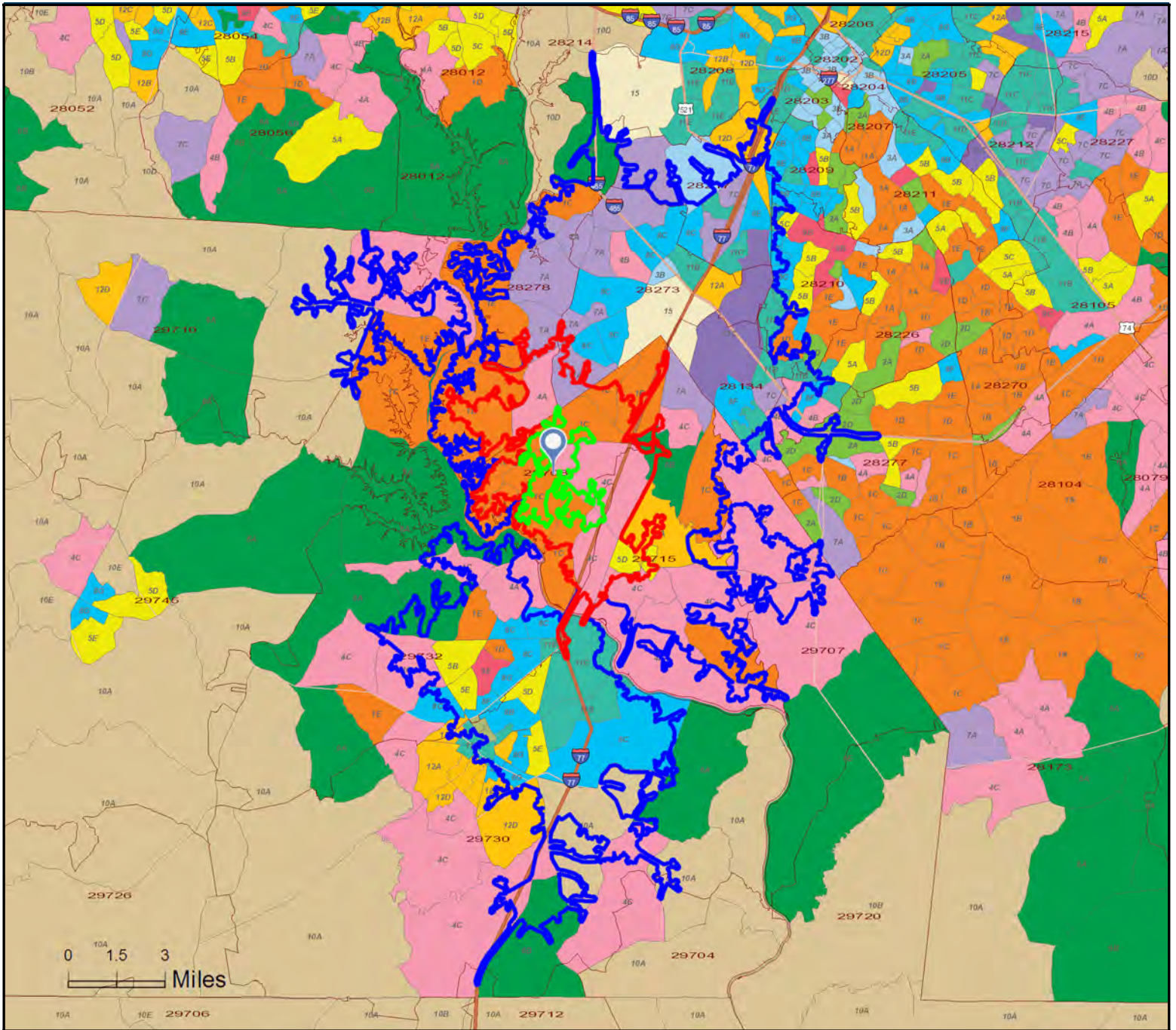
Prepared by YCED
 Latitude: 35.04714
 Longitude: -80.99151



Dominant Tapestry Map

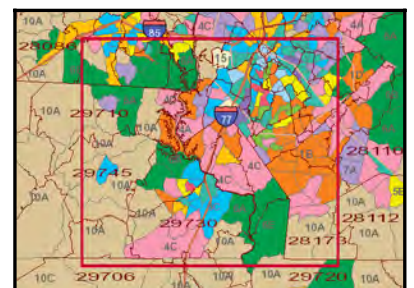
Stonecrest, Tega Cay, SC
 2451 Highway 160 W, Fort Mill, South Carolina, 29708
 Drive Time: 5, 10, 20 minute radii

Prepared by YCED
 Latitude: 35.04714
 Longitude: -80.99151



Tapestry LifeMode

- | | |
|--|--|
|  L1: Affluent Estates |  L8: Middle Ground |
|  L2: Upscale Avenues |  L9: Senior Styles |
|  L3: Uptown Individuals |  L10: Rustic Outposts |
|  L4: Family Landscapes |  L11: Midtown Singles |
|  L5: GenXurban |  L12: Hometown |
|  L6: Cozy Country |  L13: Next Wave |
|  L7: Ethnic Enclaves |  L14: Scholars and Patriots |



Source: Esri

Tapestry Segmentation

Tapestry Segmentation represents the latest generation of market segmentation systems that began over 30 years ago. The 68-segment Tapestry Segmentation system classifies U.S. neighborhoods based on their socioeconomic and demographic composition. Each segment is identified by its two-digit Segment Code. Match the two-digit segment labels on the map to the list below. Click each segment below for a detailed description.

- | | |
|---|---|
| Segment 1A (Top Tier) | Segment 8C (Bright Young Professionals) |
| Segment 1B (Professional Pride) | Segment 8D (Downtown Melting Pot) |
| Segment 1C (Boomburbs) | Segment 8E (Front Porches) |
| Segment 1D (Savvy Suburbanites) | Segment 8F (Old and Newcomers) |
| Segment 1E (Exurbanites) | Segment 8G (Hardscrabble Road) |
| Segment 2A (Urban Chic) | Segment 9A (Silver & Gold) |
| Segment 2B (Pleasantville) | Segment 9B (Golden Years) |
| Segment 2C (Pacific Heights) | Segment 9C (The Elders) |
| Segment 2D (Enterprising Professionals) | Segment 9D (Senior Escapes) |
| Segment 3A (Laptops and Lattes) | Segment 9E (Retirement Communities) |
| Segment 3B (Metro Renters) | Segment 9F (Social Security Set) |
| Segment 3C (Trendsetters) | Segment 10A (Southern Satellites) |
| Segment 4A (Soccer Moms) | Segment 10B (Rooted Rural) |
| Segment 4B (Home Improvement) | Segment 10C (Diners & Miners) |
| Segment 4C (Middleburg) | Segment 10D (Down the Road) |
| Segment 5A (Comfortable Empty Nesters) | Segment 10E (Rural Bypasses) |
| Segment 5B (In Style) | Segment 11A (City Strivers) |
| Segment 5C (Parks and Rec) | Segment 11B (Young and Restless) |
| Segment 5D (Rustbelt Traditions) | Segment 11C (Metro Fusion) |
| Segment 5E (Midlife Constants) | Segment 11D (Set to Impress) |
| Segment 6A (Green Acres) | Segment 11E (City Commons) |
| Segment 6B (Salt of the Earth) | Segment 12A (Family Foundations) |
| Segment 6C (The Great Outdoors) | Segment 12B (Traditional Living) |
| Segment 6D (Prairie Living) | Segment 12C (Small Town Simplicity) |
| Segment 6E (Rural Resort Dwellers) | Segment 12D (Modest Income Homes) |
| Segment 6F (Heartland Communities) | Segment 13A (International Marketplace) |
| Segment 7A (Up and Coming Families) | Segment 13B (Las Casas) |
| Segment 7B (Urban Villages) | Segment 13C (NeWest Residents) |
| Segment 7C (American Dreamers) | Segment 13D (Fresh Ambitions) |
| Segment 7D (Barrios Urbanos) | Segment 13E (High Rise Renters) |
| Segment 7E (Valley Growers) | Segment 14A (Military Proximity) |
| Segment 7F (Southwestern Families) | Segment 14B (College Towns) |
| Segment 8A (City Lights) | Segment 14C (Dorms to Diplomas) |
| Segment 8B (Emerald City) | Segment 15 (Unclassified) |

Tapestry Segmentation Area Profile

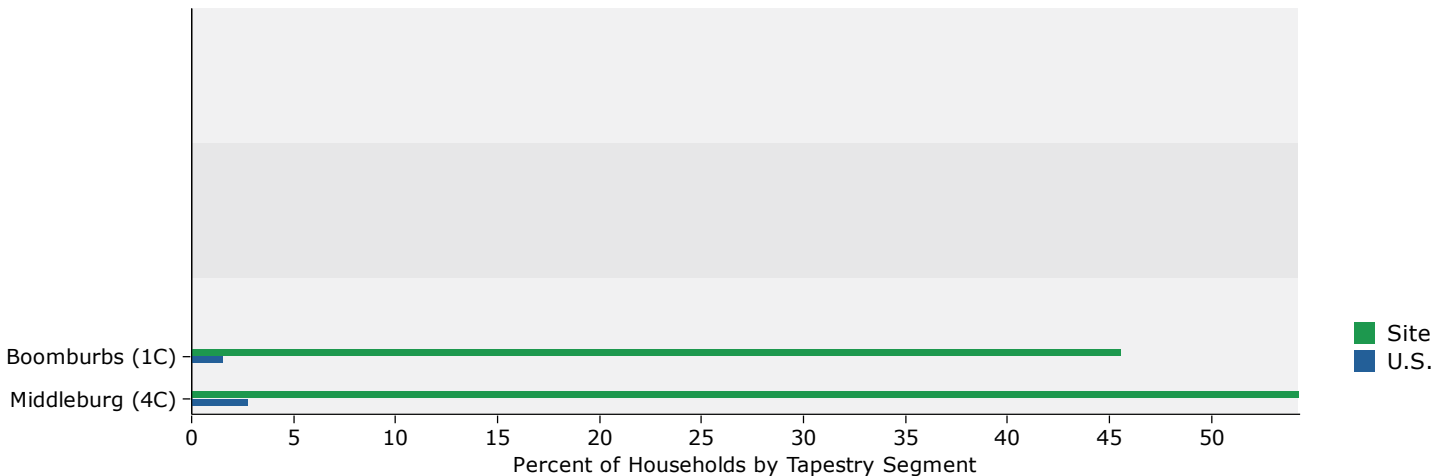
Stonecrest, Tega Cay, SC
 2451 Highway 160 W, Fort Mill, South Carolina, 29708
 Drive Time: 5 minute radius

Prepared by YCED
 Latitude: 35.04714
 Longitude: -80.99151

Top Twenty Tapestry Segments

Rank	Tapestry Segment	2016 Households		2016 U.S. Households		Index
		Percent	Cumulative Percent	Percent	Cumulative Percent	
1	Middleburg (4C)	54.4%	54.4%	2.8%	2.8%	1921
2	Boomburbs (1C)	45.6%	100.0%	1.5%	4.3%	2,956
Subtotal		100.0%		4.3%		
Total						
		100.0%		4.4%		2286

Top Ten Tapestry Segments Site vs. U.S.



Data Note: This report identifies neighborhood segments in the area, and describes the socioeconomic quality of the immediate neighborhood. The index is a comparison of the percent of households or Total Population 18+ in the area, by Tapestry segment, to the percent of households or Total Population 18+ in the United States, by segment. An index of 100 is the US average.

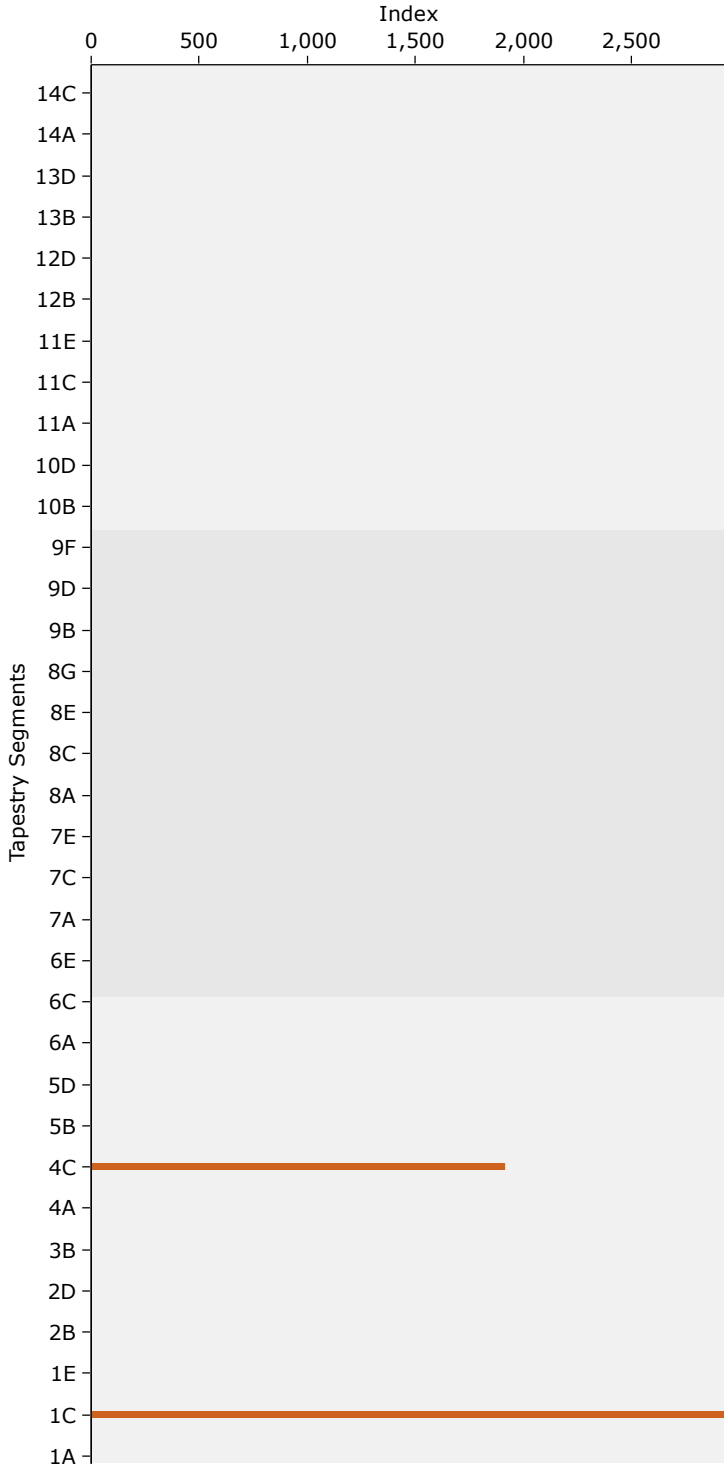
Source: Esri

Tapestry Segmentation Area Profile

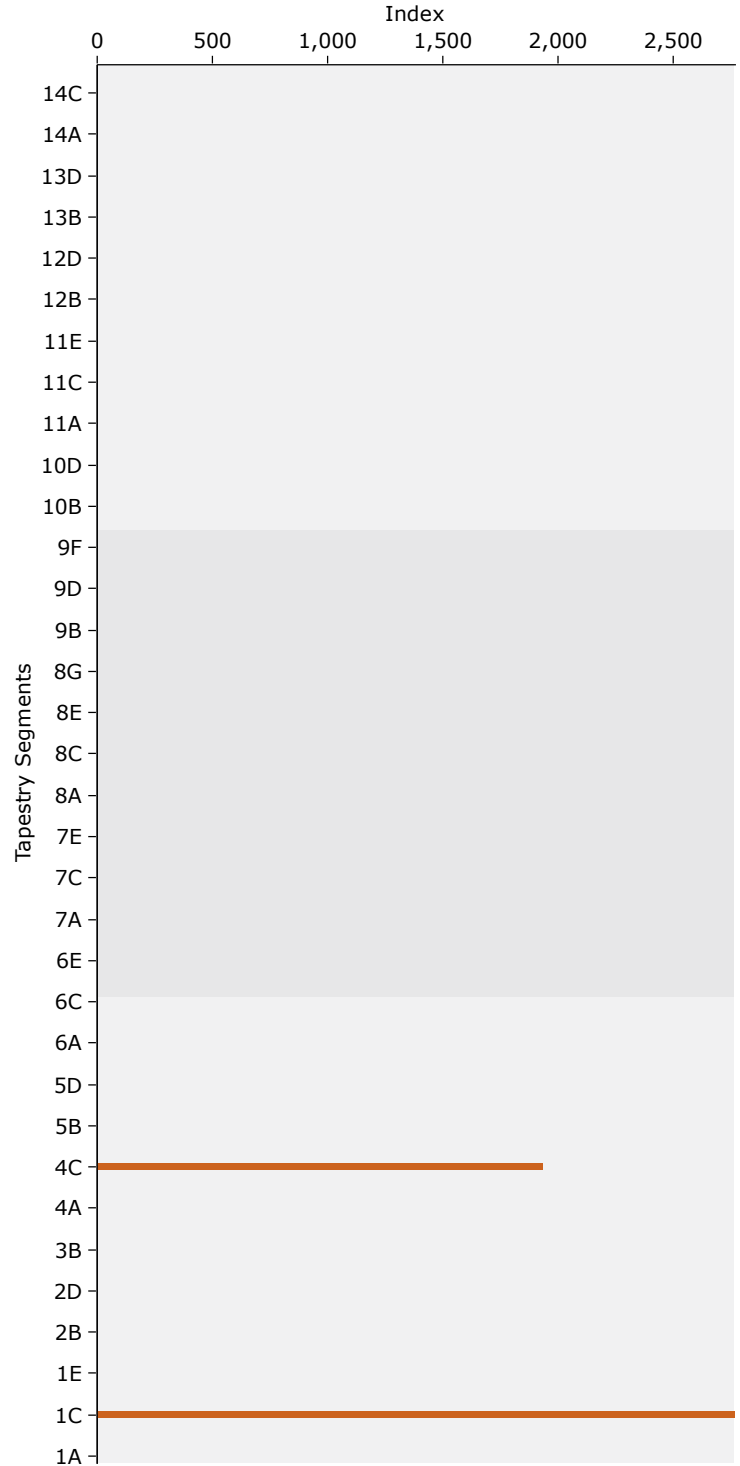
Stonecrest, Tega Cay, SC
2451 Highway 160 W, Fort Mill, South Carolina, 29708
Drive Time: 5 minute radius

Prepared by YCED
Latitude: 35.04714
Longitude: -80.99151

2016 Tapestry Indexes by Households



2016 Tapestry Indexes by Total Population 18+



Data Note: This report identifies neighborhood segments in the area, and describes the socioeconomic quality of the immediate neighborhood. The index is a comparison of the percent of households or Total Population 18+ in the area, by Tapestry segment, to the percent of households or Total Population 18+ in the United States, by segment. An index of 100 is the US average.

Source: Esri

Tapestry Segmentation Area Profile

Stonecrest, Tega Cay, SC
2451 Highway 160 W, Fort Mill, South Carolina, 29708
Drive Time: 5 minute radius

Prepared by YCED
Latitude: 35.04714
Longitude: -80.99151

Tapestry LifeMode Groups	2016 Households			2016 Adult Population		
	Number	Percent	Index	Number	Percent	Index
Total:	2,802	100.0%		5,200	100.0%	
1. Affluent Estates	1,279	45.6%	467	2,359	45.4%	437
Top Tier (1A)	0	0.0%	0	0	0.0%	0
Professional Pride (1B)	0	0.0%	0	0	0.0%	0
Boomburbs (1C)	1,279	45.6%	2956	2,359	45.4%	2773
Savvy Suburbanites (1D)	0	0.0%	0	0	0.0%	0
Exurbanites (1E)	0	0.0%	0	0	0.0%	0
2. Upscale Avenues	0	0.0%	0	0	0.0%	0
Urban Chic (2A)	0	0.0%	0	0	0.0%	0
Pleasantville (2B)	0	0.0%	0	0	0.0%	0
Pacific Heights (2C)	0	0.0%	0	0	0.0%	0
Enterprising Professionals (2D)	0	0.0%	0	0	0.0%	0
3. Uptown Individuals	0	0.0%	0	0	0.0%	0
Laptops and Lattes (3A)	0	0.0%	0	0	0.0%	0
Metro Renters (3B)	0	0.0%	0	0	0.0%	0
Trendsetters (3C)	0	0.0%	0	0	0.0%	0
4. Family Landscapes	1,523	54.4%	735	2,841	54.6%	710
Soccer Moms (4A)	0	0.0%	0	0	0.0%	0
Home Improvement (4B)	0	0.0%	0	0	0.0%	0
Middleburg (4C)	1,523	54.4%	1,921	2,841	54.6%	1,940
5. GenXurban	0	0.0%	0	0	0.0%	0
Comfortable Empty Nesters (5A)	0	0.0%	0	0	0.0%	0
In Style (5B)	0	0.0%	0	0	0.0%	0
Parks and Rec (5C)	0	0.0%	0	0	0.0%	0
Rustbelt Traditions (5D)	0	0.0%	0	0	0.0%	0
Midlife Constants (5E)	0	0.0%	0	0	0.0%	0
6. Cozy Country Living	0	0.0%	0	0	0.0%	0
Green Acres (6A)	0	0.0%	0	0	0.0%	0
Salt of the Earth (6B)	0	0.0%	0	0	0.0%	0
The Great Outdoors (6C)	0	0.0%	0	0	0.0%	0
Prairie Living (6D)	0	0.0%	0	0	0.0%	0
Rural Resort Dwellers (6E)	0	0.0%	0	0	0.0%	0
Heartland Communities (6F)	0	0.0%	0	0	0.0%	0
7. Ethnic Enclaves	0	0.0%	0	0	0.0%	0
Up and Coming Families (7A)	0	0.0%	0	0	0.0%	0
Urban Villages (7B)	0	0.0%	0	0	0.0%	0
American Dreamers (7C)	0	0.0%	0	0	0.0%	0
Barrios Urbanos (7D)	0	0.0%	0	0	0.0%	0
Valley Growers (7E)	0	0.0%	0	0	0.0%	0
Southwestern Families (7F)	0	0.0%	0	0	0.0%	0

Data Note: This report identifies neighborhood segments in the area, and describes the socioeconomic quality of the immediate neighborhood. The index is a comparison of the percent of households or Total Population 18+ in the area, by Tapestry segment, to the percent of households or Total Population 18+ in the United States, by segment. An index of 100 is the US average.

Source: Esri

Tapestry Segmentation Area Profile

Stonecrest, Tega Cay, SC
2451 Highway 160 W, Fort Mill, South Carolina, 29708
Drive Time: 5 minute radius

Prepared by YCED
Latitude: 35.04714
Longitude: -80.99151

Tapestry LifeMode Groups	2016 Households			2016 Adult Population		
	Number	Percent	Index	Number	Percent	Index
Total:	2,802	100.0%		5,200	100.0%	
8. Middle Ground	0	0.0%	0	0	0.0%	0
City Lights (8A)	0	0.0%	0	0	0.0%	0
Emerald City (8B)	0	0.0%	0	0	0.0%	0
Bright Young Professionals (8C)	0	0.0%	0	0	0.0%	0
Downtown Melting Pot (8D)	0	0.0%	0	0	0.0%	0
Front Porches (8E)	0	0.0%	0	0	0.0%	0
Old and Newcomers (8F)	0	0.0%	0	0	0.0%	0
Hardscrabble Road (8G)	0	0.0%	0	0	0.0%	0
9. Senior Styles	0	0.0%	0	0	0.0%	0
Silver & Gold (9A)	0	0.0%	0	0	0.0%	0
Golden Years (9B)	0	0.0%	0	0	0.0%	0
The Elders (9C)	0	0.0%	0	0	0.0%	0
Senior Escapes (9D)	0	0.0%	0	0	0.0%	0
Retirement Communities (9E)	0	0.0%	0	0	0.0%	0
Social Security Set (9F)	0	0.0%	0	0	0.0%	0
10. Rustic Outposts	0	0.0%	0	0	0.0%	0
Southern Satellites (10A)	0	0.0%	0	0	0.0%	0
Rooted Rural (10B)	0	0.0%	0	0	0.0%	0
Diners & Miners (10C)	0	0.0%	0	0	0.0%	0
Down the Road (10D)	0	0.0%	0	0	0.0%	0
Rural Bypasses (10E)	0	0.0%	0	0	0.0%	0
11. Midtown Singles	0	0.0%	0	0	0.0%	0
City Strivers (11A)	0	0.0%	0	0	0.0%	0
Young and Restless (11B)	0	0.0%	0	0	0.0%	0
Metro Fusion (11C)	0	0.0%	0	0	0.0%	0
Set to Impress (11D)	0	0.0%	0	0	0.0%	0
City Commons (11E)	0	0.0%	0	0	0.0%	0
12. Hometown	0	0.0%	0	0	0.0%	0
Family Foundations (12A)	0	0.0%	0	0	0.0%	0
Traditional Living (12B)	0	0.0%	0	0	0.0%	0
Small Town Simplicity (12C)	0	0.0%	0	0	0.0%	0
Modest Income Homes (12D)	0	0.0%	0	0	0.0%	0
13. Next Wave	0	0.0%	0	0	0.0%	0
International Marketplace (13A)	0	0.0%	0	0	0.0%	0
Las Casas (13B)	0	0.0%	0	0	0.0%	0
NeWest Residents (13C)	0	0.0%	0	0	0.0%	0
Fresh Ambitions (13D)	0	0.0%	0	0	0.0%	0
High Rise Renters (13E)	0	0.0%	0	0	0.0%	0
14. Scholars and Patriots	0	0.0%	0	0	0.0%	0
Military Proximity (14A)	0	0.0%	0	0	0.0%	0
College Towns (14B)	0	0.0%	0	0	0.0%	0
Dorms to Diplomas (14C)	0	0.0%	0	0	0.0%	0
Unclassified (15)	0	0.0%	0	0	0.0%	0

Data Note: This report identifies neighborhood segments in the area, and describes the socioeconomic quality of the immediate neighborhood. The index is a comparison of the percent of households or Total Population 18+ in the area, by Tapestry segment, to the percent of households or Total Population 18+ in the United States, by segment. An index of 100 is the US average.

Source: Esri

Tapestry Segmentation Area Profile

Stonecrest, Tega Cay, SC
2451 Highway 160 W, Fort Mill, South Carolina, 29708
Drive Time: 5 minute radius

Prepared by YCED
Latitude: 35.04714
Longitude: -80.99151

Tapestry Urbanization Groups	2016 Households			2016 Adult Population		
	Number	Percent	Index	Number	Percent	Index
Total:	2,802	100.0%		5,200	100.0%	
1. Principal Urban Center	0	0.0%	0	0	0.0%	0
Laptops and Lattes (3A)	0	0.0%	0	0	0.0%	0
Metro Renters (3B)	0	0.0%	0	0	0.0%	0
Trendsetters (3C)	0	0.0%	0	0	0.0%	0
Downtown Melting Pot (8D)	0	0.0%	0	0	0.0%	0
City Strivers (11A)	0	0.0%	0	0	0.0%	0
NeWest Residents (13C)	0	0.0%	0	0	0.0%	0
Fresh Ambitions (13D)	0	0.0%	0	0	0.0%	0
High Rise Renters (13E)	0	0.0%	0	0	0.0%	0
2. Urban Periphery	0	0.0%	0	0	0.0%	0
Pacific Heights (2C)	0	0.0%	0	0	0.0%	0
Rustbelt Traditions (5D)	0	0.0%	0	0	0.0%	0
Urban Villages (7B)	0	0.0%	0	0	0.0%	0
American Dreamers (7C)	0	0.0%	0	0	0.0%	0
Barrios Urbanos (7D)	0	0.0%	0	0	0.0%	0
Southwestern Families (7F)	0	0.0%	0	0	0.0%	0
City Lights (8A)	0	0.0%	0	0	0.0%	0
Bright Young Professionals (8C)	0	0.0%	0	0	0.0%	0
Metro Fusion (11C)	0	0.0%	0	0	0.0%	0
Family Foundations (12A)	0	0.0%	0	0	0.0%	0
Modest Income Homes (12D)	0	0.0%	0	0	0.0%	0
International Marketplace (13A)	0	0.0%	0	0	0.0%	0
Las Casas (13B)	0	0.0%	0	0	0.0%	0
3. Metro Cities	0	0.0%	0	0	0.0%	0
In Style (5B)	0	0.0%	0	0	0.0%	0
Emerald City (8B)	0	0.0%	0	0	0.0%	0
Front Porches (8E)	0	0.0%	0	0	0.0%	0
Old and Newcomers (8F)	0	0.0%	0	0	0.0%	0
Hardscrabble Road (8G)	0	0.0%	0	0	0.0%	0
Retirement Communities (9E)	0	0.0%	0	0	0.0%	0
Social Security Set (9F)	0	0.0%	0	0	0.0%	0
Young and Restless (11B)	0	0.0%	0	0	0.0%	0
Set to Impress (11D)	0	0.0%	0	0	0.0%	0
City Commons (11E)	0	0.0%	0	0	0.0%	0
Traditional Living (12B)	0	0.0%	0	0	0.0%	0
College Towns (14B)	0	0.0%	0	0	0.0%	0
Dorms to Diplomas (14C)	0	0.0%	0	0	0.0%	0

Data Note: This report identifies neighborhood segments in the area, and describes the socioeconomic quality of the immediate neighborhood. The index is a comparison of the percent of households or Total Population 18+ in the area, by Tapestry segment, to the percent of households or Total Population 18+ in the United States, by segment. An index of 100 is the US average.

Source: Esri

Tapestry Segmentation Area Profile

Stonecrest, Tega Cay, SC
 2451 Highway 160 W, Fort Mill, South Carolina, 29708
 Drive Time: 5 minute radius

Prepared by YCED
 Latitude: 35.04714
 Longitude: -80.99151

Tapestry Urbanization Groups	2016 Households			2016 Adult Population		
	Number	Percent	Index	Number	Percent	Index
Total:	2,802	100.0%		5,200	100.0%	
4. Suburban Periphery	1,279	45.6%	145	2,359	45.4%	141
Top Tier (1A)	0	0.0%	0	0	0.0%	0
Professional Pride (1B)	0	0.0%	0	0	0.0%	0
Boomburbs (1C)	1,279	45.6%	2,956	2,359	45.4%	2,773
Savvy Suburbanites (1D)	0	0.0%	0	0	0.0%	0
Exurbanites (1E)	0	0.0%	0	0	0.0%	0
Urban Chic (2A)	0	0.0%	0	0	0.0%	0
Pleasantville (2B)	0	0.0%	0	0	0.0%	0
Enterprising Professionals (2D)	0	0.0%	0	0	0.0%	0
Soccer Moms (4A)	0	0.0%	0	0	0.0%	0
Home Improvement (4B)	0	0.0%	0	0	0.0%	0
Comfortable Empty Nesters (5A)	0	0.0%	0	0	0.0%	0
Parks and Rec (5C)	0	0.0%	0	0	0.0%	0
Midlife Constants (5E)	0	0.0%	0	0	0.0%	0
Up and Coming Families (7A)	0	0.0%	0	0	0.0%	0
Silver & Gold (9A)	0	0.0%	0	0	0.0%	0
Golden Years (9B)	0	0.0%	0	0	0.0%	0
The Elders (9C)	0	0.0%	0	0	0.0%	0
Military Proximity (14A)	0	0.0%	0	0	0.0%	0
5. Semirural	1,523	54.4%	579	2,841	54.6%	604
Middleburg (4C)	1,523	54.4%	1,921	2,841	54.6%	1,940
Heartland Communities (6F)	0	0.0%	0	0	0.0%	0
Valley Growers (7E)	0	0.0%	0	0	0.0%	0
Senior Escapes (9D)	0	0.0%	0	0	0.0%	0
Down the Road (10D)	0	0.0%	0	0	0.0%	0
Small Town Simplicity (12C)	0	0.0%	0	0	0.0%	0
6. Rural	0	0.0%	0	0	0.0%	0
Green Acres (6A)	0	0.0%	0	0	0.0%	0
Salt of the Earth (6B)	0	0.0%	0	0	0.0%	0
The Great Outdoors (6C)	0	0.0%	0	0	0.0%	0
Prairie Living (6D)	0	0.0%	0	0	0.0%	0
Rural Resort Dwellers (6E)	0	0.0%	0	0	0.0%	0
Southern Satellites (10A)	0	0.0%	0	0	0.0%	0
Rooted Rural (10B)	0	0.0%	0	0	0.0%	0
Diners & Miners (10C)	0	0.0%	0	0	0%	0
Rural Bypasses (10E)	0	0.0%	0	0	0.0%	0
Unclassified (15)	0	0.0%	0	0	0.0%	0

Data Note: This report identifies neighborhood segments in the area, and describes the socioeconomic quality of the immediate neighborhood. The index is a comparison of the percent of households or Total Population 18+ in the area, by Tapestry segment, to the percent of households or Total Population 18+ in the United States, by segment. An index of 100 is the US average.

Source: Esri

Tapestry Segmentation Area Profile

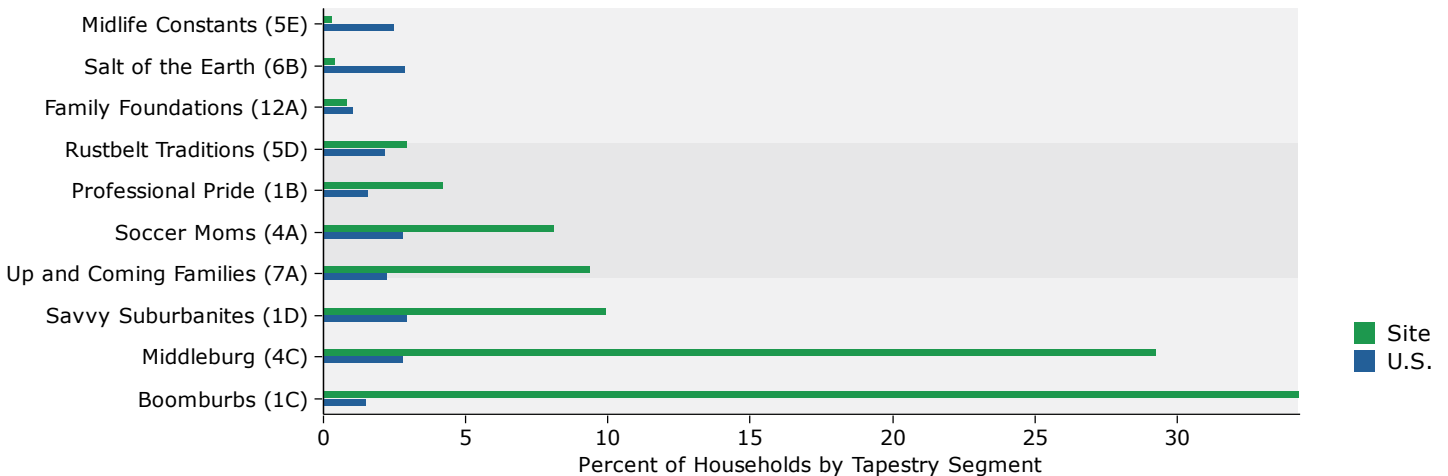
Stonecrest, Tega Cay, SC
 2451 Highway 160 W, Fort Mill, South Carolina, 29708
 Drive Time: 10 minute radius

Prepared by YCED
 Latitude: 35.04714
 Longitude: -80.99151

Top Twenty Tapestry Segments

Rank	Tapestry Segment	2016 Households		2016 U.S. Households		Index
		Percent	Cumulative Percent	Percent	Cumulative Percent	
1	Boomburbs (1C)	34.3%	34.3%	1.5%	1.5%	2223
2	Middleburg (4C)	29.3%	63.6%	2.8%	4.3%	1,035
3	Savvy Suburbanites (1D)	10.0%	73.6%	3.0%	7.3%	336
4	Up and Coming Families (7A)	9.4%	83.0%	2.3%	9.6%	413
5	Soccer Moms (4A)	8.1%	91.1%	2.8%	12.4%	285
Subtotal		91.1%		12.4%		
6	Professional Pride (1B)	4.2%	95.3%	1.6%	14.0%	264
7	Rustbelt Traditions (5D)	3.0%	98.3%	2.2%	16.2%	134
8	Family Foundations (12A)	0.8%	99.1%	1.1%	17.3%	80
9	Salt of the Earth (6B)	0.5%	99.6%	2.9%	20.2%	16
10	Midlife Constants (5E)	0.3%	99.9%	2.5%	22.7%	14
Subtotal		8.8%		10.3%		
11	Metro Fusion (11C)	0.0%	99.9%	1.4%	24.1%	1
				1.4%		
Total		100.0%		24.2%		413

Top Ten Tapestry Segments Site vs. U.S.



Data Note: This report identifies neighborhood segments in the area, and describes the socioeconomic quality of the immediate neighborhood. The index is a comparison of the percent of households or Total Population 18+ in the area, by Tapestry segment, to the percent of households or Total Population 18+ in the United States, by segment. An index of 100 is the US average.

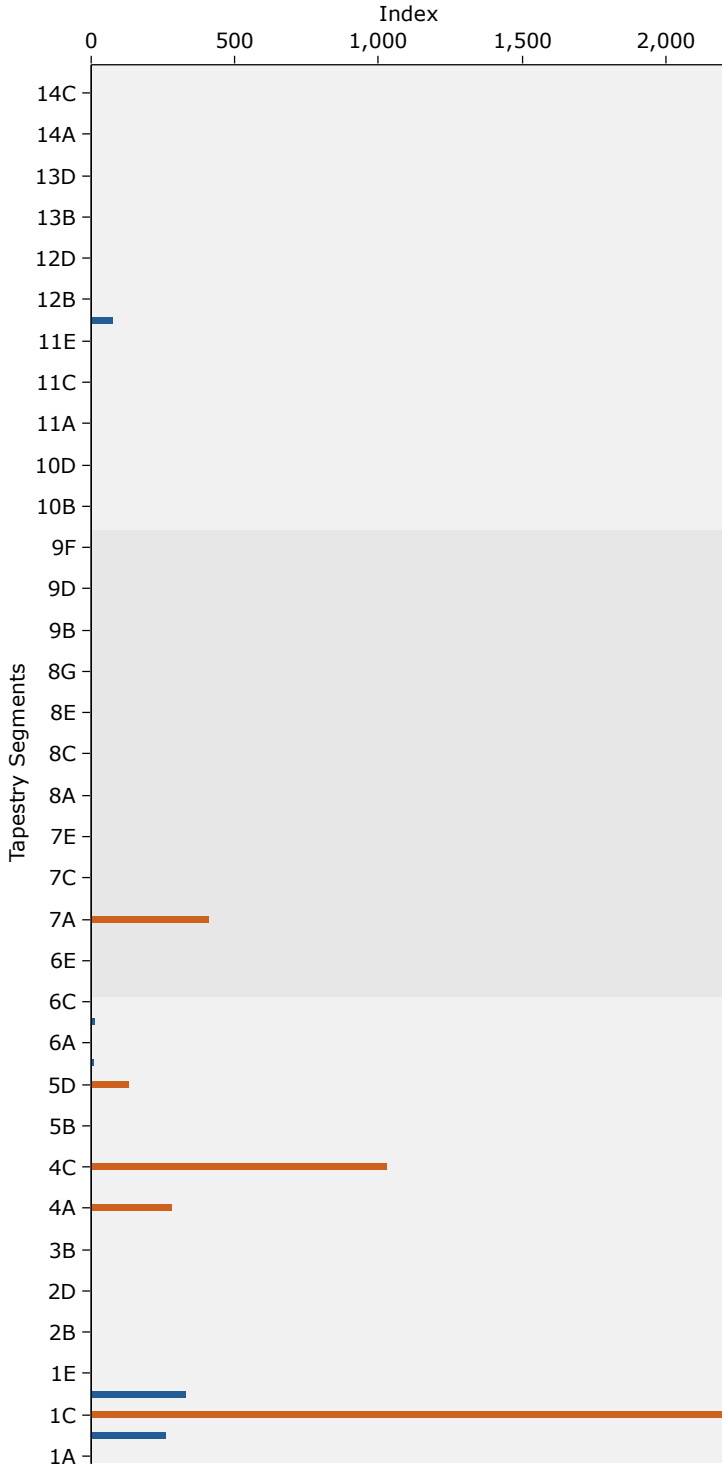
Source: Esri

Tapestry Segmentation Area Profile

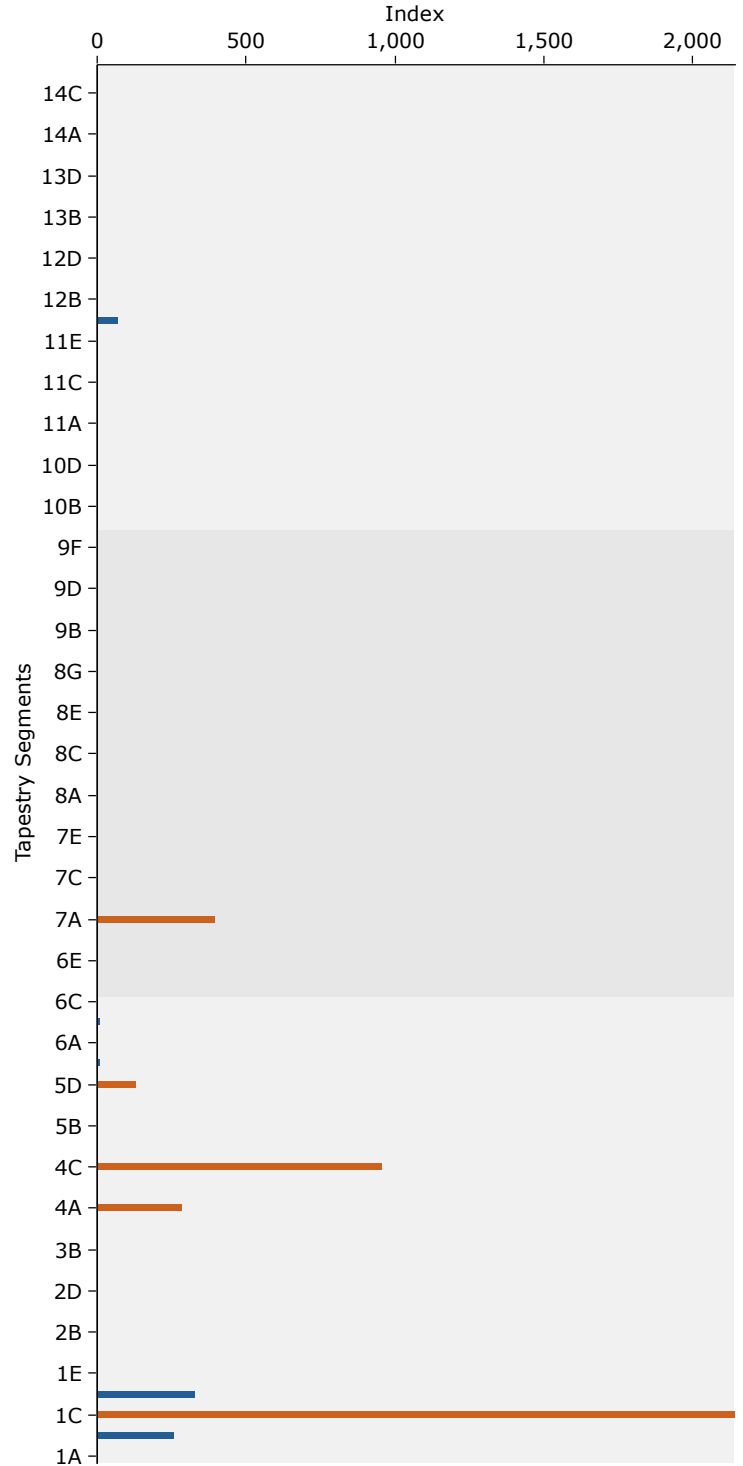
Stonecrest, Tega Cay, SC
2451 Highway 160 W, Fort Mill, South Carolina, 29708
Drive Time: 10 minute radius

Prepared by YCED
Latitude: 35.04714
Longitude: -80.99151

2016 Tapestry Indexes by Households



2016 Tapestry Indexes by Total Population 18+



Data Note: This report identifies neighborhood segments in the area, and describes the socioeconomic quality of the immediate neighborhood. The index is a comparison of the percent of households or Total Population 18+ in the area, by Tapestry segment, to the percent of households or Total Population 18+ in the United States, by segment. An index of 100 is the US average.

Source: Esri

Tapestry Segmentation Area Profile

Stonecrest, Tega Cay, SC
2451 Highway 160 W, Fort Mill, South Carolina, 29708
Drive Time: 10 minute radius

Prepared by YCED
Latitude: 35.04714
Longitude: -80.99151

Tapestry LifeMode Groups	2016 Households			2016 Adult Population		
	Number	Percent	Index	Number	Percent	Index
Total:	13,804	100.0%		27,481	100.0%	
1. Affluent Estates	6,701	48.5%	496	13,817	50.3%	485
Top Tier (1A)	0	0.0%	0	0	0.0%	0
Professional Pride (1B)	584	4.2%	264	1,288	4.7%	263
Boomburbs (1C)	4,738	34.3%	2223	9,641	35.1%	2144
Savvy Suburbanites (1D)	1,379	10.0%	336	2,888	10.5%	329
Exurbanites (1E)	0	0.0%	0	0	0.0%	0
2. Upscale Avenues	0	0.0%	0	0	0.0%	0
Urban Chic (2A)	0	0.0%	0	0	0.0%	0
Pleasantville (2B)	0	0.0%	0	0	0.0%	0
Pacific Heights (2C)	0	0.0%	0	0	0.0%	0
Enterprising Professionals (2D)	0	0.0%	0	0	0.0%	0
3. Uptown Individuals	0	0.0%	0	0	0.0%	0
Laptops and Lattes (3A)	0	0.0%	0	0	0.0%	0
Metro Renters (3B)	0	0.0%	0	0	0.0%	0
Trendsetters (3C)	0	0.0%	0	0	0.0%	0
4. Family Landscapes	5,164	37.4%	506	9,833	35.8%	465
Soccer Moms (4A)	1,121	8.1%	285	2,411	8.8%	289
Home Improvement (4B)	0	0.0%	0	0	0.0%	0
Middleburg (4C)	4,043	29.3%	1,035	7,422	27.0%	959
5. GenXurban	458	3.3%	29	858	3.1%	28
Comfortable Empty Nesters (5A)	0	0.0%	0	0	0.0%	0
In Style (5B)	0	0.0%	0	0	0.0%	0
Parks and Rec (5C)	0	0.0%	0	0	0.0%	0
Rustbelt Traditions (5D)	410	3.0%	134	770	2.8%	134
Midlife Constants (5E)	48	0.3%	14	88	0.3%	13
6. Cozy Country Living	63	0.5%	4	113	0.4%	3
Green Acres (6A)	0	0.0%	0	0	0.0%	0
Salt of the Earth (6B)	63	0.5%	16	113	0.4%	14
The Great Outdoors (6C)	0	0.0%	0	0	0.0%	0
Prairie Living (6D)	0	0.0%	0	0	0.0%	0
Rural Resort Dwellers (6E)	0	0.0%	0	0	0.0%	0
Heartland Communities (6F)	0	0.0%	0	0	0.0%	0
7. Ethnic Enclaves	1,300	9.4%	136	2,639	9.6%	119
Up and Coming Families (7A)	1,300	9.4%	413	2,639	9.6%	399
Urban Villages (7B)	0	0.0%	0	0	0.0%	0
American Dreamers (7C)	0	0.0%	0	0	0.0%	0
Barrios Urbanos (7D)	0	0.0%	0	0	0.0%	0
Valley Growers (7E)	0	0.0%	0	0	0.0%	0
Southwestern Families (7F)	0	0.0%	0	0	0.0%	0

Data Note: This report identifies neighborhood segments in the area, and describes the socioeconomic quality of the immediate neighborhood. The index is a comparison of the percent of households or Total Population 18+ in the area, by Tapestry segment, to the percent of households or Total Population 18+ in the United States, by segment. An index of 100 is the US average.

Source: Esri

Tapestry Segmentation Area Profile

Stonecrest, Tega Cay, SC
2451 Highway 160 W, Fort Mill, South Carolina, 29708
Drive Time: 10 minute radius

Prepared by YCED
Latitude: 35.04714
Longitude: -80.99151

Tapestry LifeMode Groups	2016 Households			2016 Adult Population		
	Number	Percent	Index	Number	Percent	Index
Total:	13,804	100.0%		27,481	100.0%	
8. Middle Ground	0	0.0%	0	0	0.0%	0
City Lights (8A)	0	0.0%	0	0	0.0%	0
Emerald City (8B)	0	0.0%	0	0	0.0%	0
Bright Young Professionals (8C)	0	0.0%	0	0	0.0%	0
Downtown Melting Pot (8D)	0	0.0%	0	0	0.0%	0
Front Porches (8E)	0	0.0%	0	0	0.0%	0
Old and Newcomers (8F)	0	0.0%	0	0	0.0%	0
Hardscrabble Road (8G)	0	0.0%	0	0	0.0%	0
9. Senior Styles	0	0.0%	0	0	0.0%	0
Silver & Gold (9A)	0	0.0%	0	0	0.0%	0
Golden Years (9B)	0	0.0%	0	0	0.0%	0
The Elders (9C)	0	0.0%	0	0	0.0%	0
Senior Escapes (9D)	0	0.0%	0	0	0.0%	0
Retirement Communities (9E)	0	0.0%	0	0	0.0%	0
Social Security Set (9F)	0	0.0%	0	0	0.0%	0
10. Rustic Outposts	0	0.0%	0	0	0.0%	0
Southern Satellites (10A)	0	0.0%	0	0	0.0%	0
Rooted Rural (10B)	0	0.0%	0	0	0.0%	0
Diners & Miners (10C)	0	0.0%	0	0	0.0%	0
Down the Road (10D)	0	0.0%	0	0	0.0%	0
Rural Bypasses (10E)	0	0.0%	0	0	0.0%	0
11. Midtown Singles	1	0.0%	0	1	0.0%	0
City Strivers (11A)	0	0.0%	0	0	0.0%	0
Young and Restless (11B)	0	0.0%	0	0	0.0%	0
Metro Fusion (11C)	1	0.0%	1	1	0.0%	0
Set to Impress (11D)	0	0.0%	0	0	0.0%	0
City Commons (11E)	0	0.0%	0	0	0.0%	0
12. Hometown	117	0.8%	14	220	0.8%	14
Family Foundations (12A)	117	0.8%	80	220	0.8%	74
Traditional Living (12B)	0	0.0%	0	0	0.0%	0
Small Town Simplicity (12C)	0	0.0%	0	0	0.0%	0
Modest Income Homes (12D)	0	0.0%	0	0	0.0%	0
13. Next Wave	0	0.0%	0	0	0.0%	0
International Marketplace (13A)	0	0.0%	0	0	0.0%	0
Las Casas (13B)	0	0.0%	0	0	0.0%	0
NeWest Residents (13C)	0	0.0%	0	0	0.0%	0
Fresh Ambitions (13D)	0	0.0%	0	0	0.0%	0
High Rise Renters (13E)	0	0.0%	0	0	0.0%	0
14. Scholars and Patriots	0	0.0%	0	0	0.0%	0
Military Proximity (14A)	0	0.0%	0	0	0.0%	0
College Towns (14B)	0	0.0%	0	0	0.0%	0
Dorms to Diplomas (14C)	0	0.0%	0	0	0.0%	0
Unclassified (15)	0	0.0%	0	0	0.0%	0

Data Note: This report identifies neighborhood segments in the area, and describes the socioeconomic quality of the immediate neighborhood. The index is a comparison of the percent of households or Total Population 18+ in the area, by Tapestry segment, to the percent of households or Total Population 18+ in the United States, by segment. An index of 100 is the US average.

Source: Esri

Tapestry Segmentation Area Profile

Stonecrest, Tega Cay, SC
2451 Highway 160 W, Fort Mill, South Carolina, 29708
Drive Time: 10 minute radius

Prepared by YCED
Latitude: 35.04714
Longitude: -80.99151

Tapestry Urbanization Groups	2016 Households			2016 Adult Population		
	Number	Percent	Index	Number	Percent	Index
Total:	13,804	100.0%		27,481	100.0%	
1. Principal Urban Center	0	0.0%	0	0	0.0%	0
Laptops and Lattes (3A)	0	0.0%	0	0	0.0%	0
Metro Renters (3B)	0	0.0%	0	0	0.0%	0
Trendsetters (3C)	0	0.0%	0	0	0.0%	0
Downtown Melting Pot (8D)	0	0.0%	0	0	0.0%	0
City Strivers (11A)	0	0.0%	0	0	0.0%	0
NeWest Residents (13C)	0	0.0%	0	0	0.0%	0
Fresh Ambitions (13D)	0	0.0%	0	0	0.0%	0
High Rise Renters (13E)	0	0.0%	0	0	0.0%	0
2. Urban Periphery	528	3.8%	23	991	3.6%	20
Pacific Heights (2C)	0	0.0%	0	0	0.0%	0
Rustbelt Traditions (5D)	410	3.0%	134	770	2.8%	134
Urban Villages (7B)	0	0.0%	0	0	0.0%	0
American Dreamers (7C)	0	0.0%	0	0	0.0%	0
Barrios Urbanos (7D)	0	0.0%	0	0	0.0%	0
Southwestern Families (7F)	0	0.0%	0	0	0.0%	0
City Lights (8A)	0	0.0%	0	0	0.0%	0
Bright Young Professionals (8C)	0	0.0%	0	0	0.0%	0
Metro Fusion (11C)	1	0.0%	1	1	0.0%	0
Family Foundations (12A)	117	0.8%	80	220	0.8%	74
Modest Income Homes (12D)	0	0.0%	0	0	0.0%	0
International Marketplace (13A)	0	0.0%	0	0	0.0%	0
Las Casas (13B)	0	0.0%	0	0	0.0%	0
3. Metro Cities	0	0.0%	0	0	0.0%	0
In Style (5B)	0	0.0%	0	0	0.0%	0
Emerald City (8B)	0	0.0%	0	0	0.0%	0
Front Porches (8E)	0	0.0%	0	0	0.0%	0
Old and Newcomers (8F)	0	0.0%	0	0	0.0%	0
Hardscrabble Road (8G)	0	0.0%	0	0	0.0%	0
Retirement Communities (9E)	0	0.0%	0	0	0.0%	0
Social Security Set (9F)	0	0.0%	0	0	0.0%	0
Young and Restless (11B)	0	0.0%	0	0	0.0%	0
Set to Impress (11D)	0	0.0%	0	0	0.0%	0
City Commons (11E)	0	0.0%	0	0	0.0%	0
Traditional Living (12B)	0	0.0%	0	0	0.0%	0
College Towns (14B)	0	0.0%	0	0	0.0%	0
Dorms to Diplomas (14C)	0	0.0%	0	0	0.0%	0

Data Note: This report identifies neighborhood segments in the area, and describes the socioeconomic quality of the immediate neighborhood. The index is a comparison of the percent of households or Total Population 18+ in the area, by Tapestry segment, to the percent of households or Total Population 18+ in the United States, by segment. An index of 100 is the US average.

Source: Esri

Tapestry Segmentation Area Profile

Stonecrest, Tega Cay, SC
2451 Highway 160 W, Fort Mill, South Carolina, 29708
Drive Time: 10 minute radius

Prepared by YCED
Latitude: 35.04714
Longitude: -80.99151

Tapestry Urbanization Groups	2016 Households			2016 Adult Population		
	Number	Percent	Index	Number	Percent	Index
Total:	13,804	100.0%		27,481	100.0%	
4. Suburban Periphery	9,170	66.4%	211	18,955	69.0%	214
Top Tier (1A)	0	0.0%	0	0	0.0%	0
Professional Pride (1B)	584	4.2%	264	1,288	4.7%	263
Boomburbs (1C)	4,738	34.3%	2,223	9,641	35.1%	2,144
Savvy Suburbanites (1D)	1,379	10.0%	336	2,888	10.5%	329
Exurbanites (1E)	0	0.0%	0	0	0.0%	0
Urban Chic (2A)	0	0.0%	0	0	0.0%	0
Pleasantville (2B)	0	0.0%	0	0	0.0%	0
Enterprising Professionals (2D)	0	0.0%	0	0	0.0%	0
Soccer Moms (4A)	1,121	8.1%	285	2,411	8.8%	289
Home Improvement (4B)	0	0.0%	0	0	0.0%	0
Comfortable Empty Nesters (5A)	0	0.0%	0	0	0.0%	0
Parks and Rec (5C)	0	0.0%	0	0	0.0%	0
Midlife Constants (5E)	48	0.3%	14	88	0.3%	13
Up and Coming Families (7A)	1,300	9.4%	413	2,639	9.6%	399
Silver & Gold (9A)	0	0.0%	0	0	0.0%	0
Golden Years (9B)	0	0.0%	0	0	0.0%	0
The Elders (9C)	0	0.0%	0	0	0.0%	0
Military Proximity (14A)	0	0.0%	0	0	0.0%	0
5. Semirural	4,043	29.3%	312	7,422	27.0%	298
Middleburg (4C)	4,043	29.3%	1,035	7,422	27.0%	959
Heartland Communities (6F)	0	0.0%	0	0	0.0%	0
Valley Growers (7E)	0	0.0%	0	0	0.0%	0
Senior Escapes (9D)	0	0.0%	0	0	0.0%	0
Down the Road (10D)	0	0.0%	0	0	0.0%	0
Small Town Simplicity (12C)	0	0.0%	0	0	0.0%	0
6. Rural	63	0.5%	3	113	0.4%	2
Green Acres (6A)	0	0.0%	0	0	0.0%	0
Salt of the Earth (6B)	63	0.5%	16	113	0.4%	14
The Great Outdoors (6C)	0	0.0%	0	0	0.0%	0
Prairie Living (6D)	0	0.0%	0	0	0.0%	0
Rural Resort Dwellers (6E)	0	0.0%	0	0	0.0%	0
Southern Satellites (10A)	0	0.0%	0	0	0.0%	0
Rooted Rural (10B)	0	0.0%	0	0	0.0%	0
Diners & Miners (10C)	0	0.0%	0	0	0.0%	0
Rural Bypasses (10E)	0	0.0%	0	0	0.0%	0
Unclassified (15)	0	0.0%	0	0	0.0%	0

Data Note: This report identifies neighborhood segments in the area, and describes the socioeconomic quality of the immediate neighborhood. The index is a comparison of the percent of households or Total Population 18+ in the area, by Tapestry segment, to the percent of households or Total Population 18+ in the United States, by segment. An index of 100 is the US average.

Source: Esri

Tapestry Segmentation Area Profile

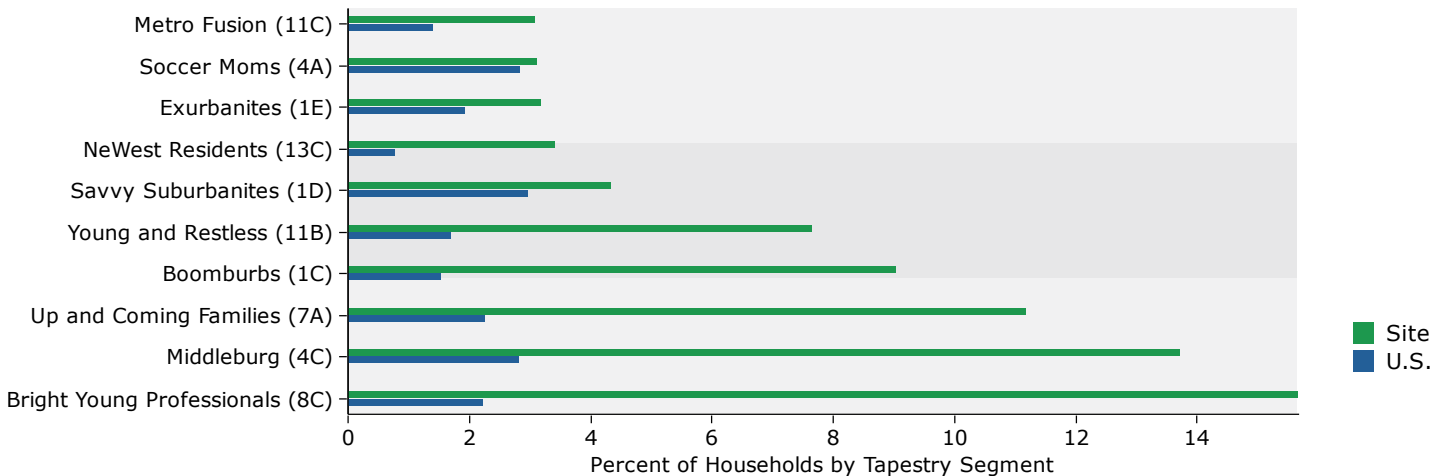
Stonecrest, Tega Cay, SC
 2451 Highway 160 W, Fort Mill, South Carolina, 29708
 Drive Time: 20 minute radius

Prepared by YCED
 Latitude: 35.04714
 Longitude: -80.99151

Top Twenty Tapestry Segments

Rank	Tapestry Segment	2016 Households		2016 U.S. Households		Index
		Percent	Cumulative Percent	Percent	Cumulative Percent	
1	Bright Young Professionals (8C)	15.7%	15.7%	2.2%	2.2%	704
2	Middleburg (4C)	13.7%	29.4%	2.8%	5.0%	486
3	Up and Coming Families (7A)	11.2%	40.6%	2.3%	7.3%	490
4	Boomburbs (1C)	9.1%	49.7%	1.5%	8.8%	586
5	Young and Restless (11B)	7.7%	57.4%	1.7%	10.5%	447
Subtotal		57.4%		10.5%		
6	Savvy Suburbanites (1D)	4.3%	61.7%	3.0%	13.5%	146
7	NeWest Residents (13C)	3.4%	65.1%	0.8%	14.3%	439
8	Exurbanites (1E)	3.2%	68.3%	1.9%	16.2%	164
9	Soccer Moms (4A)	3.1%	71.4%	2.8%	19.0%	110
10	Metro Fusion (11C)	3.1%	74.5%	1.4%	20.4%	221
Subtotal		17.1%		9.9%		
11	Hardscrabble Road (8G)	2.9%	77.4%	1.2%	21.6%	231
12	Home Improvement (4B)	1.9%	79.3%	1.7%	23.3%	110
13	Old and Newcomers (8F)	1.7%	81.0%	2.3%	25.6%	74
14	Family Foundations (12A)	1.7%	82.7%	1.1%	26.7%	156
15	Metro Renters (3B)	1.6%	84.3%	1.5%	28.2%	109
Subtotal		9.8%		7.8%		
16	Set to Impress (11D)	1.6%	85.9%	1.4%	29.6%	115
17	Midlife Constants (5E)	1.5%	87.4%	2.5%	32.1%	58
18	In Style (5B)	1.4%	88.8%	2.3%	34.4%	63
19	Rustbelt Traditions (5D)	1.4%	90.2%	2.2%	36.6%	61
20	Green Acres (6A)	1.3%	91.5%	3.2%	39.8%	41
Subtotal		7.2%		11.6%		
Total		91.4%		40.0%		229

Top Ten Tapestry Segments Site vs. U.S.



Data Note: This report identifies neighborhood segments in the area, and describes the socioeconomic quality of the immediate neighborhood. The index is a comparison of the percent of households or Total Population 18+ in the area, by Tapestry segment, to the percent of households or Total Population 18+ in the United States, by segment. An index of 100 is the US average.

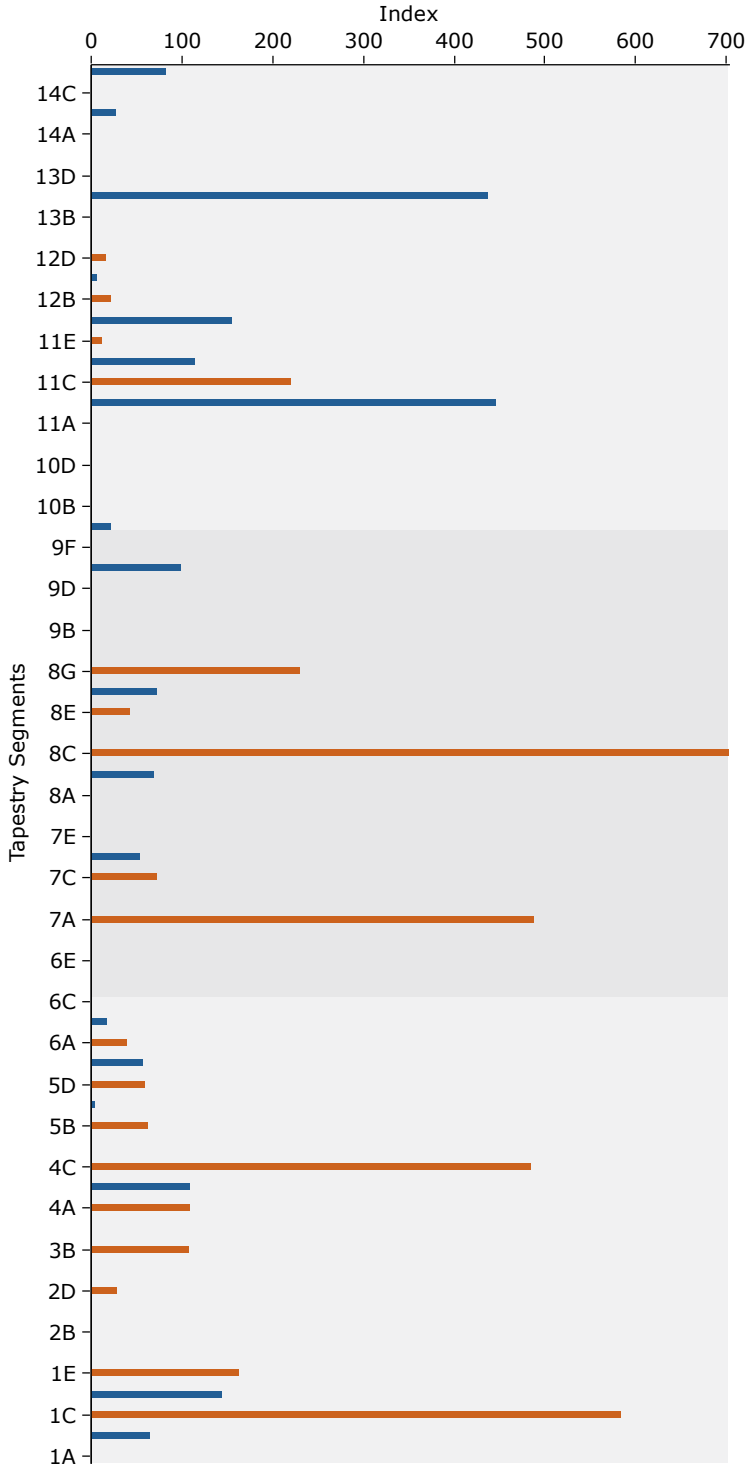
Source: Esri

Tapestry Segmentation Area Profile

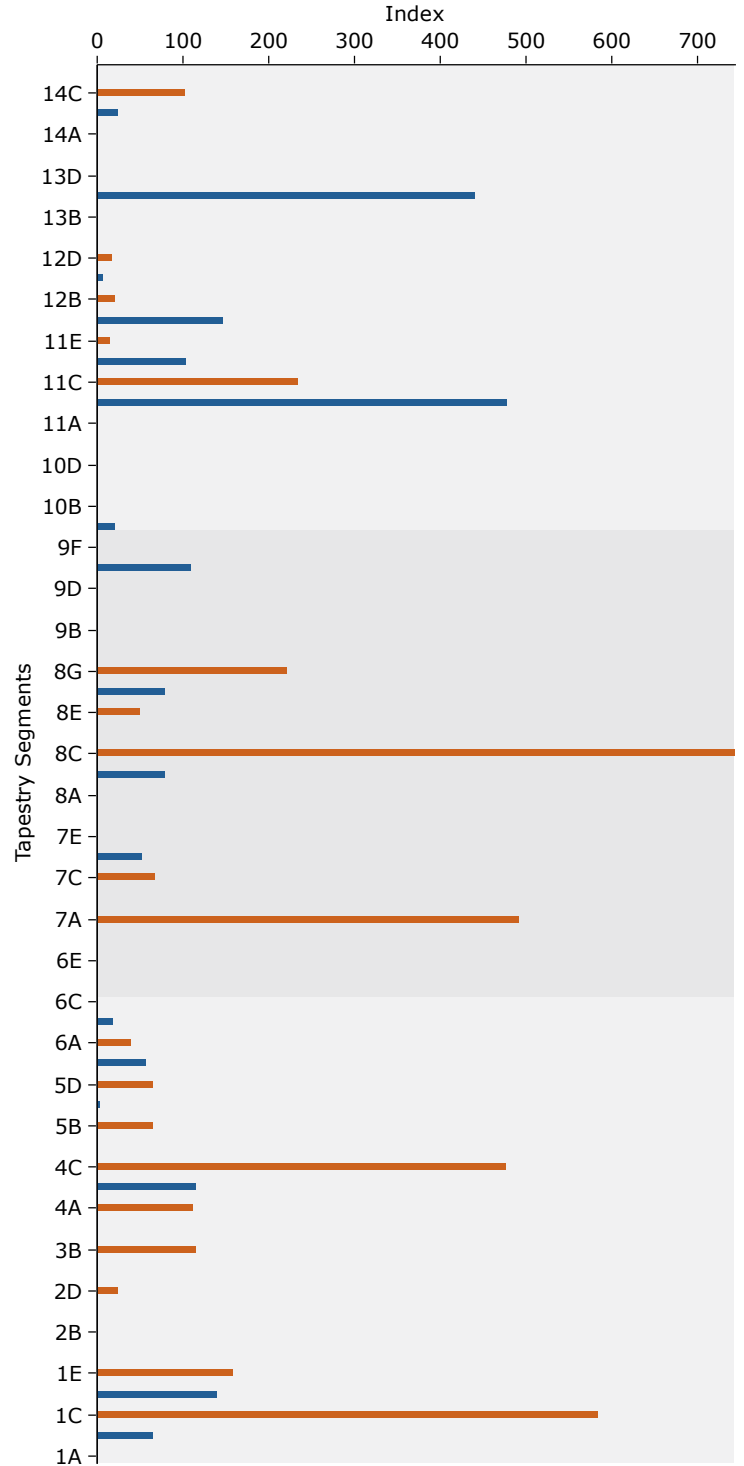
Stonecrest, Tega Cay, SC
2451 Highway 160 W, Fort Mill, South Carolina, 29708
Drive Time: 20 minute radius

Prepared by YCED
Latitude: 35.04714
Longitude: -80.99151

2016 Tapestry Indexes by Households



2016 Tapestry Indexes by Total Population 18+



Data Note: This report identifies neighborhood segments in the area, and describes the socioeconomic quality of the immediate neighborhood. The index is a comparison of the percent of households or Total Population 18+ in the area, by Tapestry segment, to the percent of households or Total Population 18+ in the United States, by segment. An index of 100 is the US average.

Source: Esri

Tapestry Segmentation Area Profile

Stonecrest, Tega Cay, SC
2451 Highway 160 W, Fort Mill, South Carolina, 29708
Drive Time: 20 minute radius

Prepared by YCED
Latitude: 35.04714
Longitude: -80.99151

Tapestry LifeMode Groups	2016 Households			2016 Adult Population		
	Number	Percent	Index	Number	Percent	Index
Total:	90,032	100.0%		175,414	100.0%	
1. Affluent Estates	15,883	17.6%	180	32,139	18.3%	177
Top Tier (1A)	0	0.0%	0	0	0.0%	0
Professional Pride (1B)	948	1.1%	66	2,060	1.2%	66
Boomburbs (1C)	8,153	9.1%	586	16,754	9.6%	584
Savvy Suburbanites (1D)	3,916	4.3%	146	7,853	4.5%	140
Exurbanites (1E)	2,866	3.2%	164	5,472	3.1%	160
2. Upscale Avenues	383	0.4%	8	599	0.3%	6
Urban Chic (2A)	3	0.0%	0	6	0.0%	0
Pleasantville (2B)	0	0.0%	0	0	0.0%	0
Pacific Heights (2C)	0	0.0%	0	0	0.0%	0
Enterprising Professionals (2D)	380	0.4%	30	593	0.3%	26
3. Uptown Individuals	1,479	1.6%	45	2,411	1.4%	46
Laptops and Lattes (3A)	0	0.0%	0	0	0.0%	0
Metro Renters (3B)	1,479	1.6%	109	2,411	1.4%	116
Trendsetters (3C)	0	0.0%	0	0	0.0%	0
4. Family Landscapes	16,882	18.8%	254	33,340	19.0%	247
Soccer Moms (4A)	2,819	3.1%	110	6,013	3.4%	113
Home Improvement (4B)	1,693	1.9%	110	3,784	2.2%	117
Middleburg (4C)	12,370	13.7%	486	23,543	13.4%	477
5. GenXurban	3,887	4.3%	38	7,336	4.2%	38
Comfortable Empty Nesters (5A)	0	0.0%	0	0	0.0%	0
In Style (5B)	1,274	1.4%	63	2,385	1.4%	65
Parks and Rec (5C)	82	0.1%	5	156	0.1%	5
Rustbelt Traditions (5D)	1,217	1.4%	61	2,373	1.4%	65
Midlife Constants (5E)	1,314	1.5%	58	2,422	1.4%	58
6. Cozy Country Living	1,670	1.9%	15	3,342	1.9%	16
Green Acres (6A)	1,169	1.3%	41	2,351	1.3%	41
Salt of the Earth (6B)	501	0.6%	19	991	0.6%	19
The Great Outdoors (6C)	0	0.0%	0	0	0.0%	0
Prairie Living (6D)	0	0.0%	0	0	0.0%	0
Rural Resort Dwellers (6E)	0	0.0%	0	0	0.0%	0
Heartland Communities (6F)	0	0.0%	0	0	0.0%	0
7. Ethnic Enclaves	11,567	12.8%	185	23,958	13.7%	169
Up and Coming Families (7A)	10,077	11.2%	490	20,804	11.9%	492
Urban Villages (7B)	0	0.0%	0	0	0.0%	0
American Dreamers (7C)	971	1.1%	73	1,994	1.1%	68
Barrios Urbanos (7D)	519	0.6%	55	1,160	0.7%	53
Valley Growers (7E)	0	0.0%	0	0	0.0%	0
Southwestern Families (7F)	0	0.0%	0	0	0.0%	0

Data Note: This report identifies neighborhood segments in the area, and describes the socioeconomic quality of the immediate neighborhood. The index is a comparison of the percent of households or Total Population 18+ in the area, by Tapestry segment, to the percent of households or Total Population 18+ in the United States, by segment. An index of 100 is the US average.

Source: Esri

Tapestry Segmentation Area Profile

Stonecrest, Tega Cay, SC
2451 Highway 160 W, Fort Mill, South Carolina, 29708
Drive Time: 20 minute radius

Prepared by YCED
Latitude: 35.04714
Longitude: -80.99151

Tapestry LifeMode Groups	2016 Households			2016 Adult Population		
	Number	Percent	Index	Number	Percent	Index
Total:	90,032	100.0%		175,414	100.0%	
8. Middle Ground	19,776	22.0%	201	36,698	20.9%	205
City Lights (8A)	0	0.0%	0	0	0.0%	0
Emerald City (8B)	900	1.0%	71	1,713	1.0%	80
Bright Young Professionals (8C)	14,120	15.7%	704	26,187	14.9%	744
Downtown Melting Pot (8D)	0	0.0%	0	0	0.0%	0
Front Porches (8E)	640	0.7%	44	1,348	0.8%	50
Old and Newcomers (8F)	1,546	1.7%	74	2,860	1.6%	81
Hardscrabble Road (8G)	2,570	2.9%	231	4,590	2.6%	222
9. Senior Styles	1,095	1.2%	21	1,969	1.1%	22
Silver & Gold (9A)	0	0.0%	0	0	0.0%	0
Golden Years (9B)	0	0.0%	0	0	0.0%	0
The Elders (9C)	0	0.0%	0	0	0.0%	0
Senior Escapes (9D)	0	0.0%	0	0	0.0%	0
Retirement Communities (9E)	1,095	1.2%	100	1,969	1.1%	110
Social Security Set (9F)	0	0.0%	0	0	0.0%	0
10. Rustic Outposts	630	0.7%	8	1,210	0.7%	8
Southern Satellites (10A)	630	0.7%	22	1,210	0.7%	22
Rooted Rural (10B)	0	0.0%	0	0	0.0%	0
Diners & Miners (10C)	0	0.0%	0	0	0.0%	0
Down the Road (10D)	0	0.0%	0	0	0.0%	0
Rural Bypasses (10E)	0	0.0%	0	0	0.0%	0
11. Midtown Singles	11,235	12.5%	201	19,355	11.0%	201
City Strivers (11A)	0	0.0%	0	0	0.0%	0
Young and Restless (11B)	6,893	7.7%	447	11,573	6.6%	479
Metro Fusion (11C)	2,798	3.1%	221	5,386	3.1%	235
Set to Impress (11D)	1,437	1.6%	115	2,174	1.2%	104
City Commons (11E)	107	0.1%	13	222	0.1%	16
12. Hometown	2,233	2.5%	40	4,163	2.4%	40
Family Foundations (12A)	1,490	1.7%	156	2,804	1.6%	147
Traditional Living (12B)	413	0.5%	23	718	0.4%	22
Small Town Simplicity (12C)	123	0.1%	7	239	0.1%	8
Modest Income Homes (12D)	207	0.2%	17	402	0.2%	18
13. Next Wave	3,075	3.4%	88	6,664	3.8%	85
International Marketplace (13A)	0	0.0%	0	0	0.0%	0
Las Casas (13B)	0	0.0%	0	0	0.0%	0
NeWest Residents (13C)	3,075	3.4%	439	6,664	3.8%	441
Fresh Ambitions (13D)	0	0.0%	0	0	0.0%	0
High Rise Renters (13E)	0	0.0%	0	0	0.0%	0
14. Scholars and Patriots	236	0.3%	16	2,229	1.3%	56
Military Proximity (14A)	0	0.0%	0	0	0.0%	0
College Towns (14B)	235	0.3%	28	449	0.3%	25
Dorms to Diplomas (14C)	1	0.0%	0	1,780	1.0%	103
Unclassified (15)	1	0.0%	83	1	0.0%	0

Data Note: This report identifies neighborhood segments in the area, and describes the socioeconomic quality of the immediate neighborhood. The index is a comparison of the percent of households or Total Population 18+ in the area, by Tapestry segment, to the percent of households or Total Population 18+ in the United States, by segment. An index of 100 is the US average.

Source: Esri

Tapestry Segmentation Area Profile

Stonecrest, Tega Cay, SC
2451 Highway 160 W, Fort Mill, South Carolina, 29708
Drive Time: 20 minute radius

Prepared by YCED
Latitude: 35.04714
Longitude: -80.99151

Tapestry Urbanization Groups	2016 Households			2016 Adult Population		
	Number	Percent	Index	Number	Percent	Index
Total:	90,032	100.0%		175,414	100.0%	
1. Principal Urban Center	4,554	5.1%	72	9,075	5.2%	78
Laptops and Lattes (3A)	0	0.0%	0	0	0.0%	0
Metro Renters (3B)	1,479	1.6%	109	2,411	1.4%	116
Trendsetters (3C)	0	0.0%	0	0	0.0%	0
Downtown Melting Pot (8D)	0	0.0%	0	0	0.0%	0
City Strivers (11A)	0	0.0%	0	0	0.0%	0
NeWest Residents (13C)	3,075	3.4%	439	6,664	3.8%	441
Fresh Ambitions (13D)	0	0.0%	0	0	0.0%	0
High Rise Renters (13E)	0	0.0%	0	0	0.0%	0
2. Urban Periphery	21,322	23.7%	141	40,306	23.0%	128
Pacific Heights (2C)	0	0.0%	0	0	0.0%	0
Rustbelt Traditions (5D)	1,217	1.4%	61	2,373	1.4%	65
Urban Villages (7B)	0	0.0%	0	0	0.0%	0
American Dreamers (7C)	971	1.1%	73	1,994	1.1%	68
Barrios Urbanos (7D)	519	0.6%	55	1,160	0.7%	53
Southwestern Families (7F)	0	0.0%	0	0	0.0%	0
City Lights (8A)	0	0.0%	0	0	0.0%	0
Bright Young Professionals (8C)	14,120	15.7%	704	26,187	14.9%	744
Metro Fusion (11C)	2,798	3.1%	221	5,386	3.1%	235
Family Foundations (12A)	1,490	1.7%	156	2,804	1.6%	147
Modest Income Homes (12D)	207	0.2%	17	402	0.2%	18
International Marketplace (13A)	0	0.0%	0	0	0.0%	0
Las Casas (13B)	0	0.0%	0	0	0.0%	0
3. Metro Cities	17,111	19.0%	104	31,781	18.1%	107
In Style (5B)	1,274	1.4%	63	2,385	1.4%	65
Emerald City (8B)	900	1.0%	71	1,713	1.0%	80
Front Porches (8E)	640	0.7%	44	1,348	0.8%	50
Old and Newcomers (8F)	1,546	1.7%	74	2,860	1.6%	81
Hardscrabble Road (8G)	2,570	2.9%	231	4,590	2.6%	222
Retirement Communities (9E)	1,095	1.2%	100	1,969	1.1%	110
Social Security Set (9F)	0	0.0%	0	0	0.0%	0
Young and Restless (11B)	6,893	7.7%	447	11,573	6.6%	479
Set to Impress (11D)	1,437	1.6%	115	2,174	1.2%	104
City Commons (11E)	107	0.1%	13	222	0.1%	16
Traditional Living (12B)	413	0.5%	23	718	0.4%	22
College Towns (14B)	235	0.3%	28	449	0.3%	25
Dorms to Diplomas (14C)	1	0.0%	0	1,780	1.0%	103

Data Note: This report identifies neighborhood segments in the area, and describes the socioeconomic quality of the immediate neighborhood. The index is a comparison of the percent of households or Total Population 18+ in the area, by Tapestry segment, to the percent of households or Total Population 18+ in the United States, by segment. An index of 100 is the US average.

Source: Esri

Tapestry Segmentation Area Profile

Stonecrest, Tega Cay, SC
2451 Highway 160 W, Fort Mill, South Carolina, 29708
Drive Time: 20 minute radius

Prepared by YCED
Latitude: 35.04714
Longitude: -80.99151

Tapestry Urbanization Groups	2016 Households			2016 Adult Population		
	Number	Percent	Index	Number	Percent	Index
Total:	90,032	100.0%		175,414	100.0%	
4. Suburban Periphery	32,251	35.8%	114	65,917	37.6%	117
Top Tier (1A)	0	0.0%	0	0	0.0%	0
Professional Pride (1B)	948	1.1%	66	2,060	1.2%	66
Boomburbs (1C)	8,153	9.1%	586	16,754	9.6%	584
Savvy Suburbanites (1D)	3,916	4.3%	146	7,853	4.5%	140
Exurbanites (1E)	2,866	3.2%	164	5,472	3.1%	160
Urban Chic (2A)	3	0.0%	0	6	0.0%	0
Pleasantville (2B)	0	0.0%	0	0	0.0%	0
Enterprising Professionals (2D)	380	0.4%	30	593	0.3%	26
Soccer Moms (4A)	2,819	3.1%	110	6,013	3.4%	113
Home Improvement (4B)	1,693	1.9%	110	3,784	2.2%	117
Comfortable Empty Nesters (5A)	0	0.0%	0	0	0.0%	0
Parks and Rec (5C)	82	0.1%	5	156	0.1%	5
Midlife Constants (5E)	1,314	1.5%	58	2,422	1.4%	58
Up and Coming Families (7A)	10,077	11.2%	490	20,804	11.9%	492
Silver & Gold (9A)	0	0.0%	0	0	0.0%	0
Golden Years (9B)	0	0.0%	0	0	0.0%	0
The Elders (9C)	0	0.0%	0	0	0.0%	0
Military Proximity (14A)	0	0.0%	0	0	0.0%	0
5. Semirural	12,493	13.9%	148	23,782	13.6%	150
Middleburg (4C)	12,370	13.7%	486	23,543	13.4%	477
Heartland Communities (6F)	0	0.0%	0	0	0.0%	0
Valley Growers (7E)	0	0.0%	0	0	0.0%	0
Senior Escapes (9D)	0	0.0%	0	0	0.0%	0
Down the Road (10D)	0	0.0%	0	0	0.0%	0
Small Town Simplicity (12C)	123	0.1%	7	239	0.1%	8
6. Rural	2,300	2.6%	15	4,552	2.6%	15
Green Acres (6A)	1,169	1.3%	41	2,351	1.3%	41
Salt of the Earth (6B)	501	0.6%	19	991	0.6%	19
The Great Outdoors (6C)	0	0.0%	0	0	0.0%	0
Prairie Living (6D)	0	0.0%	0	0	0.0%	0
Rural Resort Dwellers (6E)	0	0.0%	0	0	0.0%	0
Southern Satellites (10A)	630	0.7%	22	1,210	0.7%	22
Rooted Rural (10B)	0	0.0%	0	0	0.0%	0
Diners & Miners (10C)	0	0.0%	0	0	0.0%	0
Rural Bypasses (10E)	0	0.0%	0	0	0.0%	0
Unclassified (15)	1	0.0%	83	1	0.0%	0

Data Note: This report identifies neighborhood segments in the area, and describes the socioeconomic quality of the immediate neighborhood. The index is a comparison of the percent of households or Total Population 18+ in the area, by Tapestry segment, to the percent of households or Total Population 18+ in the United States, by segment. An index of 100 is the US average.

Source: Esri